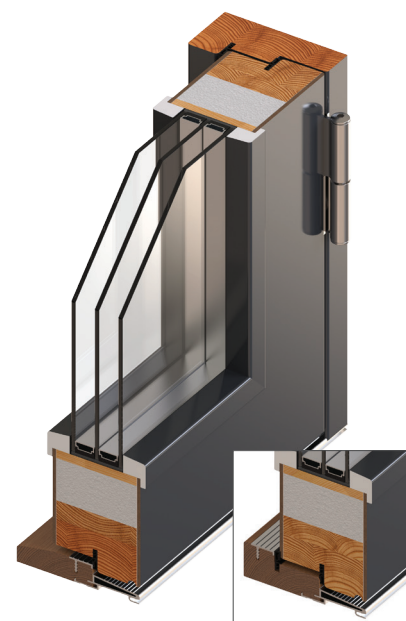




Usage:	Entrance door for buildings
Opening:	Outside
Resistance to wind load:	C4
Water tightness:	7A
Heat transmission value (U):	0,77 W=(m ² *K)
Air permeability:	Class 4
Load-bearing capacity of safety devices:	NPD
Acoustic performance:	Rw 30 – 35 dB

TECHNICAL SPECIFICATIONS

Sizes:	700–1200 x 1500-2400 mm Possible to produce as double-door
Door thickness:	82 mm
Frame:	53 x 115 mm pine frame
Clear opening (door open 90°)	M9-700mm, M10-800mm, M11-900mm
Insulation:	EPS 200 (75 mm)
Door skin:	On both sides: 3,2 mm HDF (Lesonit H10 high density fiberboard) + 0,3 mm thick aluminium sheet
Glazing:	3K 4-18 mm; 3K 6/4/6-16 mm LowE + Argon filling + warm spacer; Clear glass as standard, Satin, Crepi and Cotzwold as option
Glazing lists:	PVC; glazing bar 16 x 16 mm, crosslist RL 16 x 28 mm
Sealing:	in door leaf and in frame
Lock-case:	ASSA 2002
Stricking-plate:	VRR200/40, adjustable
Hinges:	N3248-110; height adjustable, burglary protected lift hinges; 4 pcs per door leaf
Threshold:	Aluminium + oak, 23mm (35mm as option)



Threshold 35mm as option

